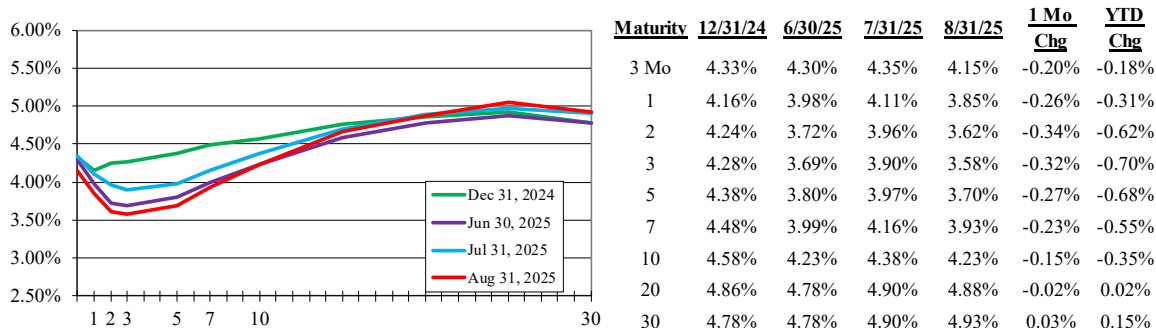


Baird Advisors Fixed Income Market Commentary August 2025

Curve Steepens as Short Treasury Yields Decline Sharply on Expectations of a September Rate Cut

The July nonfarm payrolls report set the tone for August trading. Not only were the +73k jobs reported for the month below market expectations (+105k), but the prior two months data were revised significantly lower from +291k net new jobs (May and June) to only +33k, the largest such revision since 1978. Not surprisingly, Treasuries rallied on the news. For the month, 2yr Treasury yields fell 34 bps (to 3.62%) while 10yr yields fell -15 bps (to 4.23%), steepening the 2s10s curve slope by 19 bps to +61 bps spread. The steepening trend extended to the longest maturities, where inflation, growing fiscal deficits and tariff-related uncertainty weighed more heavily, as 30yr yields *rose* 3 bps in August. Inflation, as measured by Core CPI, was 3.1% YoY, above the 3.0% consensus expectation. Hourly earnings of 3.9% YoY also exceeded expectations (+3.8%). In Chair Powell's prepared remarks at the Fed's annual symposium in Jackson Hole, WY, he acknowledged that "downside risks to employment are rising" and may "warrant adjusting our policy," leading market odds of a 25 bps cut at the September FOMC meeting to rise from 40% prior to the July payroll report on 8/1 to 88% by month end. Yet, he cautioned that "monetary policy is not on a preset course" given the potential tariff impact on consumer prices.

Treasury Yields



Spreads Mixed in August

US Agency RMBS (-6 bps) and non-Agy CMBS (-5 bps) both experienced tightening in August. Conversely, US IG Corporates (+3 bps) and EM debt widened (+8 bps) for the month. Nevertheless, spreads for many sectors remain tighter than historical averages, particularly among longer maturities, indicative of flatter than normal spread curves.

Total Returns Positive in August

The Agg Index produced 1.20% of total return for the month and is approaching 5% YTD. Total returns for all major fixed income sectors finished positive, led by Agy RMBS (+1.61%). Excess returns were also positive across the board aside from IG Corporate debt (-0.08%), which finished negative as the sector's additional carry was unable to offset its modest spread widening. Agy RMBS excess returns were highest in August (+0.47%).

Option-Adjusted Spreads (in bps)

	12/31/24	6/30/25	7/31/25	8/31/25	1 Mo Chg	YTD Chg
U.S. Aggregate Index*	32	32	31	30	-1	-2
U.S. Agency (non-mortgage)	12	10	11	11	0	-1
Mortgage and ABS Sectors						
U.S. Agency RMBS (Pass-throughs)*	34	37	40	34	-6	0
U.S. Agency CMBS	35	37	35	35	0	0
U.S. Non-Agency CMBS	127	132	127	122	-5	-5
Asset-Backed Securities	44	57	51	51	0	7
Corporate Sectors						
U.S. Investment Grade	80	83	76	79	3	-1
Industrial	78	81	74	77	3	-1
Utility	82	93	84	86	2	4
Financial Institutions	82	85	77	80	3	-2
Non-Corporate Credit	55	51	47	45	-2	-10
U.S. High Yield Corporates	287	290	278	272	-6	-15
Emerging Market Debt	393	393	355	363	8	-30

Source: Bloomberg Indices

*U.S. Aggregate Index and U.S. Agency RMBS spreads in 2024 have been adjusted to incorporate Bloomberg's most recent prepayment model, which was updated on 1/24/2025
(Bloomberg updates the prepayment model on an annual basis which impacts the sector OAS).

Total Returns of Selected Bloomberg Indices and Subsectors

	MTD Total Return	MTD Excess Return	3 Mo Total Return	3 Mo Excess Return	YTD Total Return	YTD Excess Return	Effective Duration (years)
U.S. Aggregate Index	1.20%	0.11%	2.48%	0.46%	4.99%	0.37%	6.03
U.S. Gov't/Credit Index	1.05%	-0.02%	2.31%	0.33%	4.81%	0.29%	6.13
U.S. Intermediate Gov't/Credit Index	1.22%	-0.03%	2.16%	0.19%	5.26%	0.27%	3.76
U.S. 1-3 Yr. Gov't/Credit Index	0.88%	0.01%	1.50%	0.07%	3.80%	0.16%	1.87
U.S. Treasury	1.06%	0.00%	1.92%	0.00%	4.48%	0.00%	5.85
U.S. Agency (Non-Mortgage)	1.01%	0.04%	1.80%	0.08%	4.37%	0.20%	3.17
U.S. Agency RMBS (Pass-Throughs)	1.61%	0.47%	3.00%	0.84%	5.48%	0.59%	5.91
CMBS (Commercial Mortgage Backed Securities)	1.47%	0.17%	2.59%	0.55%	5.91%	0.74%	3.91
ABS (Asset-Backed Securities)	0.96%	0.05%	1.96%	0.40%	4.05%	0.27%	2.67
U.S. Corporate Investment Grade	1.01%	-0.08%	2.97%	0.88%	5.30%	-0.72%	6.80
U.S. High Yield Corporates	1.25%	0.20%	3.58%	1.82%	6.35%	1.88%	2.80
Emerging Market Debt	1.35%	0.22%	4.95%	2.96%	8.17%	3.43%	4.87
Municipal Bond Index	0.87%	N/A	1.29%	N/A	0.32%	N/A	7.13
Taxable Municipal Bond: Agg Eligible	1.24%	0.15%	3.54%	1.23%	4.68%	0.03%	9.08
TIPS (Treasury Inflation Protected Securities)	1.54%	0.00%	2.63%	0.00%	6.41%	0.00%	6.62

*Excess return represents the return of a spread sector versus a like-duration U.S. Treasury.

Disclosures

Information in this document regarding market or economic trends, or the factors influencing historical or future performance, reflects the opinions of management as of the date of this document. These statements should not be relied upon for any other purpose. This is not a complete analysis of every material fact regarding any company, industry or security. The information has been obtained from sources we consider to be reliable, but we cannot guarantee the accuracy. *Past performance is not a guarantee of future results.*

Fixed income is generally considered to be a more conservative investment than stocks, but bonds and other fixed income investments still carry a variety of risks such as interest rate risk, credit risk, inflation risk, and liquidity risk. In a rising interest rate environment, the value of fixed-income securities generally decline and conversely, in a falling interest rate environment, the value of fixed-income securities generally increase. High yield securities may be subject to heightened market, interest rate or credit risk and should not be purchased solely because of the stated yield.

Treasury yields are the interest rates that the U.S. government pays to borrow money for varying periods of time.

Option-adjusted spread is the difference between the yield of a security that pays fixed interest payments and the current U.S. Treasury rates, which represents the rate of return on a risk-free investment.

The Bloomberg U.S. Aggregate Bond Index is an index comprised of approximately 6000 publicly traded bonds including U.S. Government, mortgage-backed, corporate, and Yankee bonds with an average maturity of approximately 10 years.

The Bloomberg Government/Credit Index is a combination of the Government Index which measures government-bond general and Treasury funds, and the Credit Bond Index, which is a market value-weighted index which tracks the returns of all publicly issued, fixed-rate, nonconvertible, dollar-denominated, SEC registered, investment grade Corporate Debt.

The Bloomberg Intermediate U.S. Government/Credit Bond Index is a combination of the Government Index which measures government-bond general and Treasury funds, and the Credit Bond Index, which is a market value-weighted index which tracks the returns of all publicly issued, fixed-rate, nonconvertible, dollar-denominated, SEC registered, investment grade Corporate Debt with maturities between one and ten years.

The Bloomberg 1-3 Year U.S. Government/Credit Bond Index is a combination of the Government Index which measures government-bond general and Treasury funds, and the Credit Bond Index, which is a market value-weighted index which tracks the returns of all publicly issued, fixed-rate, nonconvertible, dollar-denominated, SEC registered, investment grade Corporate Debt with maturities between zero and three years.

The Bloomberg U.S. Treasury Index includes public obligations of the U.S. Treasury. Treasury bills are excluded by the maturity constraint of at least one year but are part of a separate Short Treasury Index. In addition, certain special issues, such as state and local government series bonds (SLGs), as well as U.S. Treasury TIPS, are excluded. STRIPS are excluded from the index because their inclusion would result in double-counting. Securities in the Index roll up to the U.S. Aggregate, U.S. Universal, and Global Aggregate Indices. The U.S. Treasury Index was launched on January 1, 1973.

U.S. Agency: This index is the U.S. Agency component of the U.S. Government/Credit index. Publicly issued debt of U.S. Government agencies, quasi-federal corporations, and corporate or foreign debt guaranteed by the U.S. Government (such as USAID securities). The largest issues are Fannie Mae, Freddie Mac, and the Federal Home Loan Bank System (FHLB). The index includes both callable and non-callable agency securities.

U.S. Corporate – Investment Grade: This index is the Corporate component of the U.S. Credit index. It includes publicly issued U.S. corporate and specified foreign debentures and secured notes that meet the specified maturity, liquidity, and quality requirements. To qualify, bonds must be SEC-registered.

CMBS (Commercial Mortgage-Backed Securities): This index is the CMBS component of the U.S. Aggregate index. The Bloomberg CMBS ERISA-Eligible Index is the ERISA-eligible component of the Bloomberg CMBS Index. This index, which includes investment grade securities that are ERISA eligible under the underwriter's exemption, is the only CMBS sector that is included in the U.S. Aggregate Index.

MBS (Mortgage-Backed Securities): This index is the U.S. MBS component of the U.S. Aggregate index. The MBS Index covers the mortgage-backed pass-through securities of Ginnie Mae (GNMA), Fannie Mae (FNMA), and Freddie Mac (FHLMC). The MBS Index is formed by grouping the universe of over 600,000 individual fixed rate MBS pools into approximately 3,500 generic aggregates.

ABS (Asset-Backed Securities): This index is the ABS component of the U.S. Aggregate index. The ABS index has three subsectors: credit and charge cards, autos, and utility. The index includes pass-through, bullet, and controlled amortization structures. The ABS Index includes only the senior class of each ABS issue and the ERISA-eligible B and C tranche. The Manufactured Housing sector was removed as of January 1, 2008, and the Home Equity Loan sector was removed as of October 1, 2009.

Corporate High Yield: The Bloomberg U.S. High Yield Index covers the universe of fixed rate, non-investment grade debt. Eurobonds and debt issues from countries designated as emerging markets (sovereign rating of Baa1/BBB+/BBB+ and below using the middle of Moody's, S&P, and Fitch) are excluded, but Canadian and global bonds (SEC registered) of issuers in non-EMG countries are included. Original issue zeroes, step-up coupon structures, 144-As and pay-in-kind bonds (PIKs, as of October 1, 2009) are also included.

Emerging Market: Bloomberg uses a fixed list of countries defined as emerging markets countries for index inclusion purposes that is based on World Bank Income group definitions (Low/Middle), IMF country classifications (Non-Advanced Economies), and other advanced economies that may be less accessible or investable for global debt investors.

The Bloomberg Municipal Bond Index is a broad-based, total-return index. The bonds are all investment-grade, tax-exempt, and fixed-rate securities with long-term maturities (greater than 2 years). They are selected from issues larger than \$50 million.

The Bloomberg TIPS Index consists of Treasury Inflation Protected Securities (TIPS). TIPS are securities whose principal is tied to the Consumer Price Index. TIPS pay interest semi-annually, based on the fixed rate applied to the adjusted principal.

Ratings are measured on a scale that ranges from AAA or Aaa (highest) to D or C (lowest). Investment grade investments are those rated from highest down to BBB- or Baa3.

This is not a complete analysis of every material fact regarding any company, industry or security. The information has been obtained from sources we consider to be reliable, but we cannot guarantee the accuracy. Indices are unmanaged and are not available for direct investment.